



# SY SEMICONDUCTOR PVT LTD

2023



---

# Content

---

**01** | Company Profile

**02** | Personnel distribution

**03** | organizational structure

**04** | Capability (product, production, reliability)

**05** | Factory workshop

**06** | System certification

# Company Profile



- Establishment: 2010
- Address: No. 18, Changfeng Road, Rulin Development Zone, Jintan District, Changzhou, Jiangsu Province
- Registered capital: 10.08 million yuan
- General Manager: Jiang Jun
- Factory area: 18000 square meters
- Plant scale: 14500 square meters



## ***Mission&Vision:***

***Become a diode semiconductor supplier with the most reliable quality, the most competitive price and the most professional service***

# About SYSEMICONDUCTOR INDIA



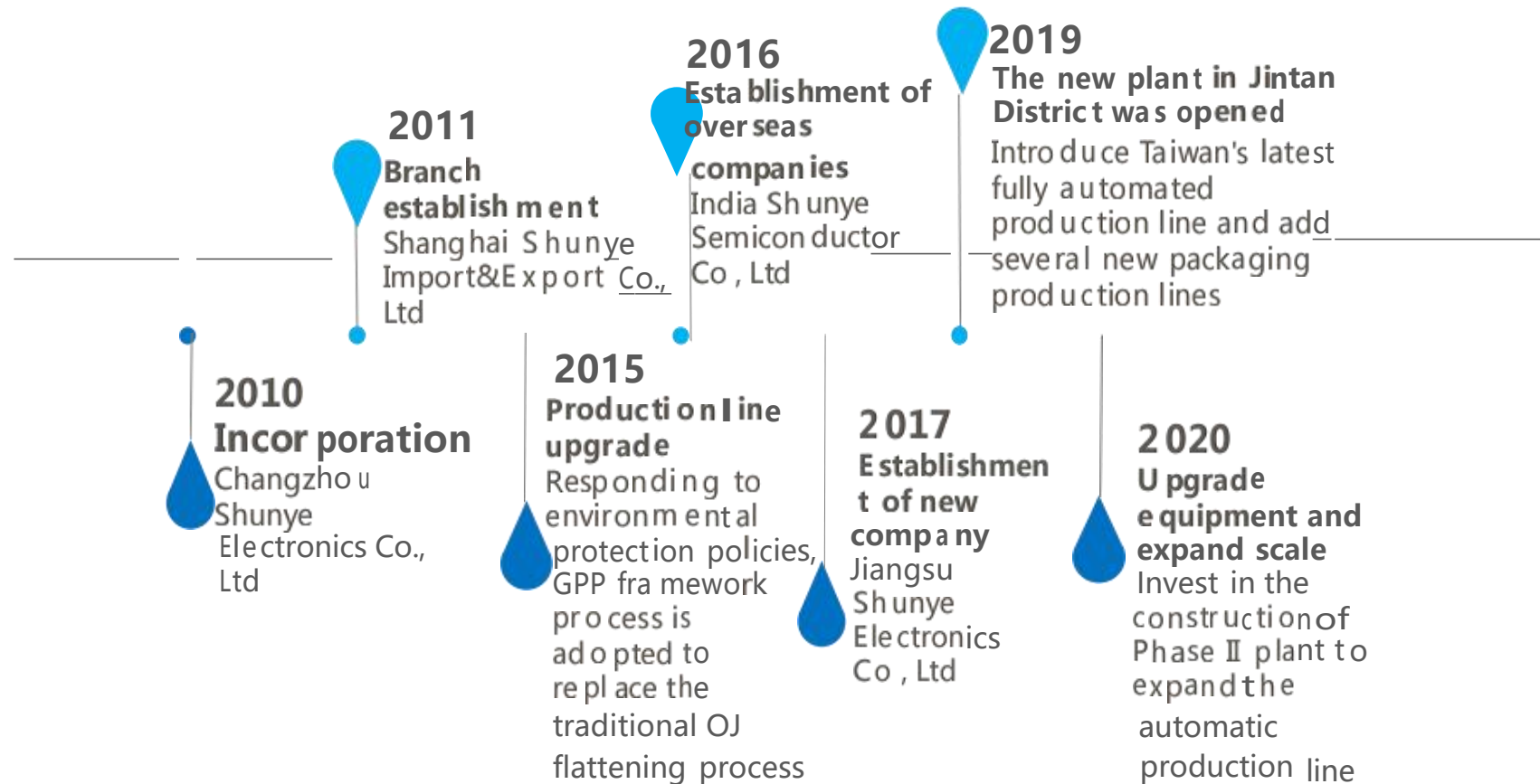
Our company is a manufacturer specializing in the R&D, production, sales and technical support of diode and transformer semiconductor devices

Since its establishment, the company has imported advanced automation equipment from Taiwan and Japan, which has improved production efficiency and product quality, optimized the number of employees, and won the recognition of high tech enterprises in Jiangsu

Province The factory has passed ISO9001:2015 and IATF16949:2016 system certification, and the products have passed ROHS and REACH certification In the past years of production and operation practice, we have always taken "the most relevant quality, the most competitive price and the most professional service" as the company's core business policy and daily code of conduct, and provided a wide range of product series for customers around the world, including variety director, TVS, small signal codes, bridge directors The main product markets cover automobiles, computers, consumer appliances, electronic communications, etc

We are always people oriented, with a dedicated and professional management team, and are committed to continuous quality improvement, effective cost saving and consistent customer service

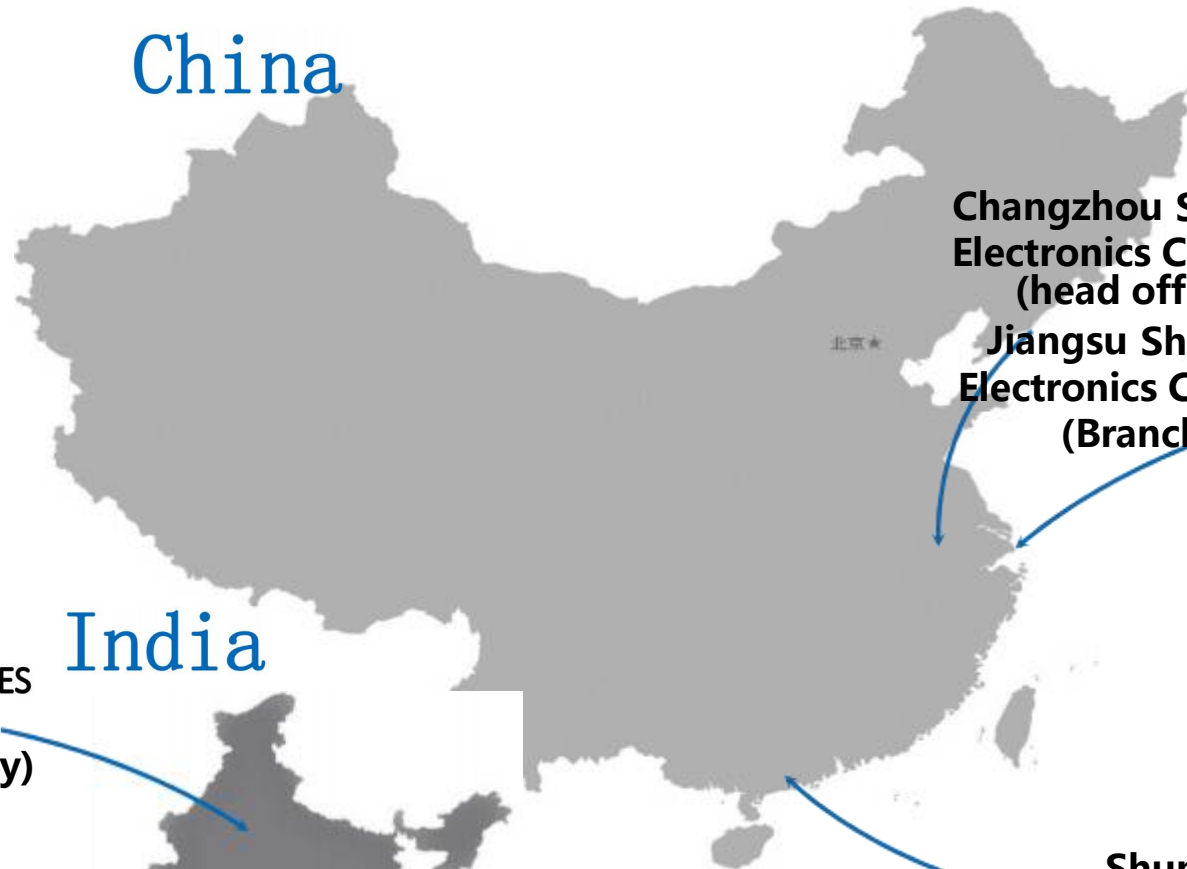
# development history





# Member distribution

## China



**Changzhou Shunye Electronics Co., Ltd. (head office)**

**Jiangsu Shunye Electronics Co., Ltd (Branch)**

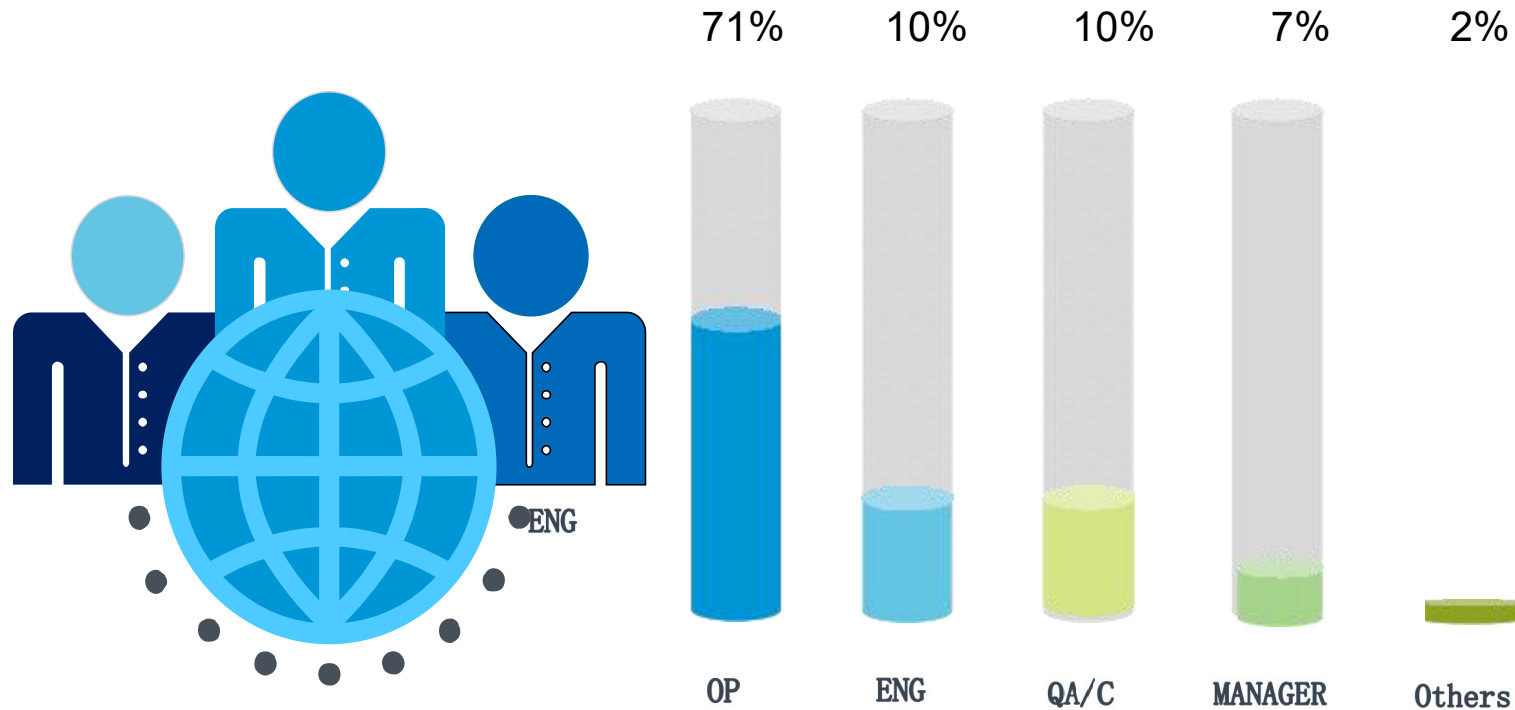
**Lingxin Microelectronics (Shanghai) Co., Ltd. (Shanghai Sales Company)  
Shanghai Shunye Import&Export Co., Ltd. (Import&Export Corporation)**

## India

**SMOOTH INDUSTRIES PRIVATE LIMITED (Indian company)**

**Shunye International Group Co., Ltd. (Hong Kong Company)**

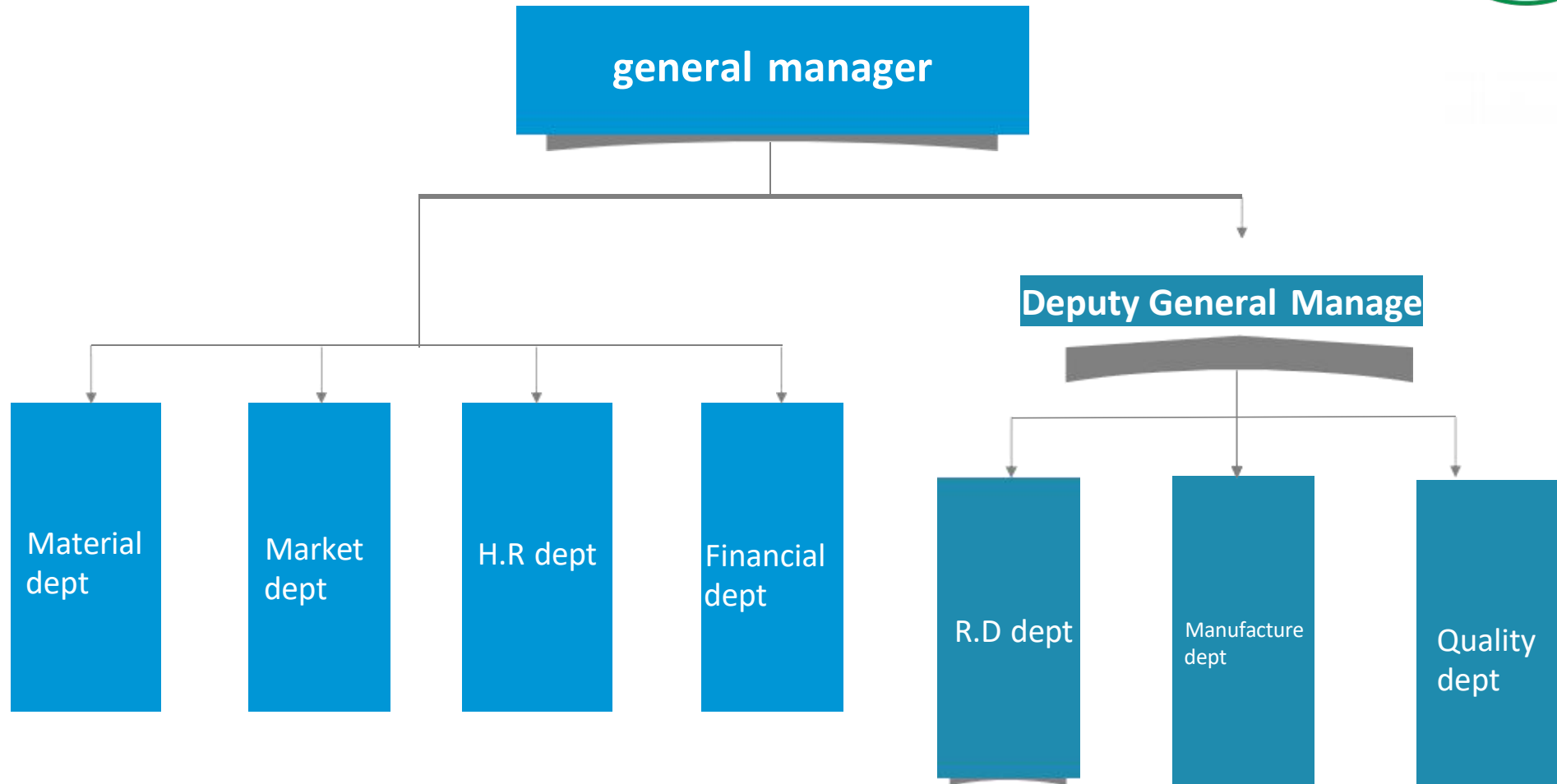
# Personnel distribution



At present, the company has about 186 employees, of which engineering and technical personnel account for about 10%, quality assurance personnel account for about 10%, and accounting, finance, personnel, planning and other department personnel account for about 7%.

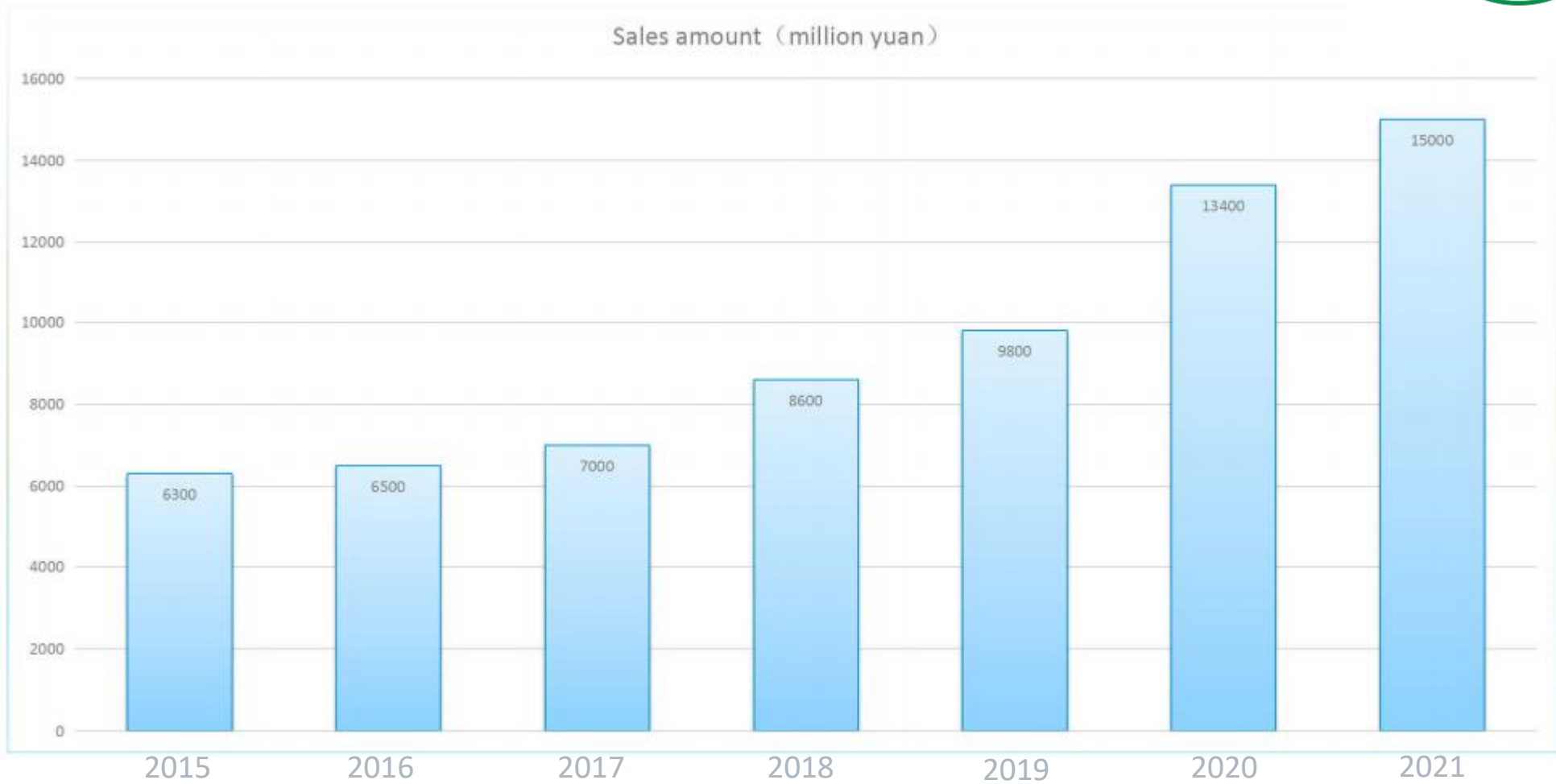


# organizational structure





# Total sales

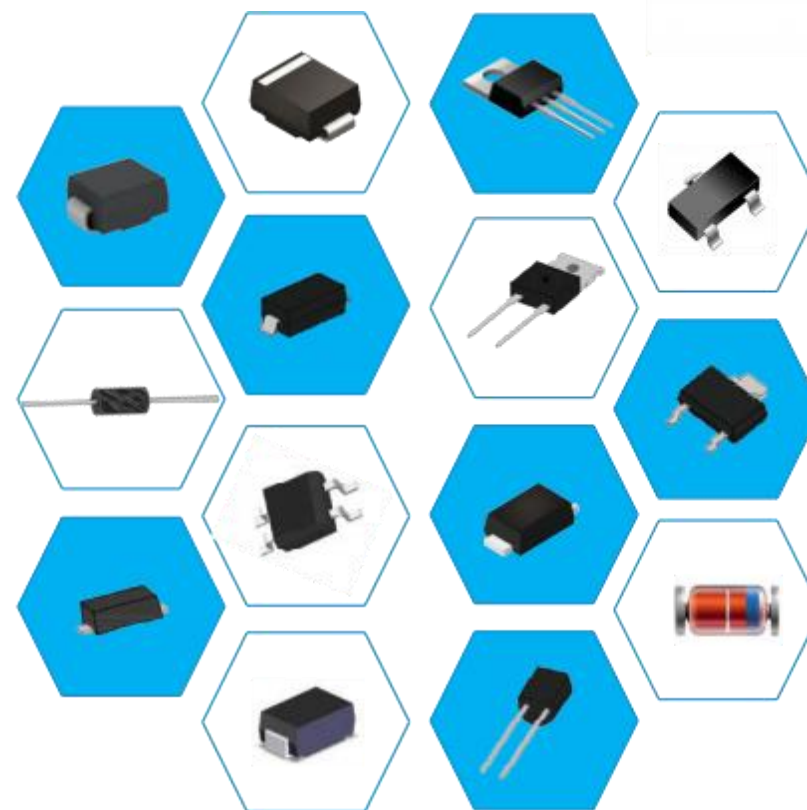


# Product Introduction

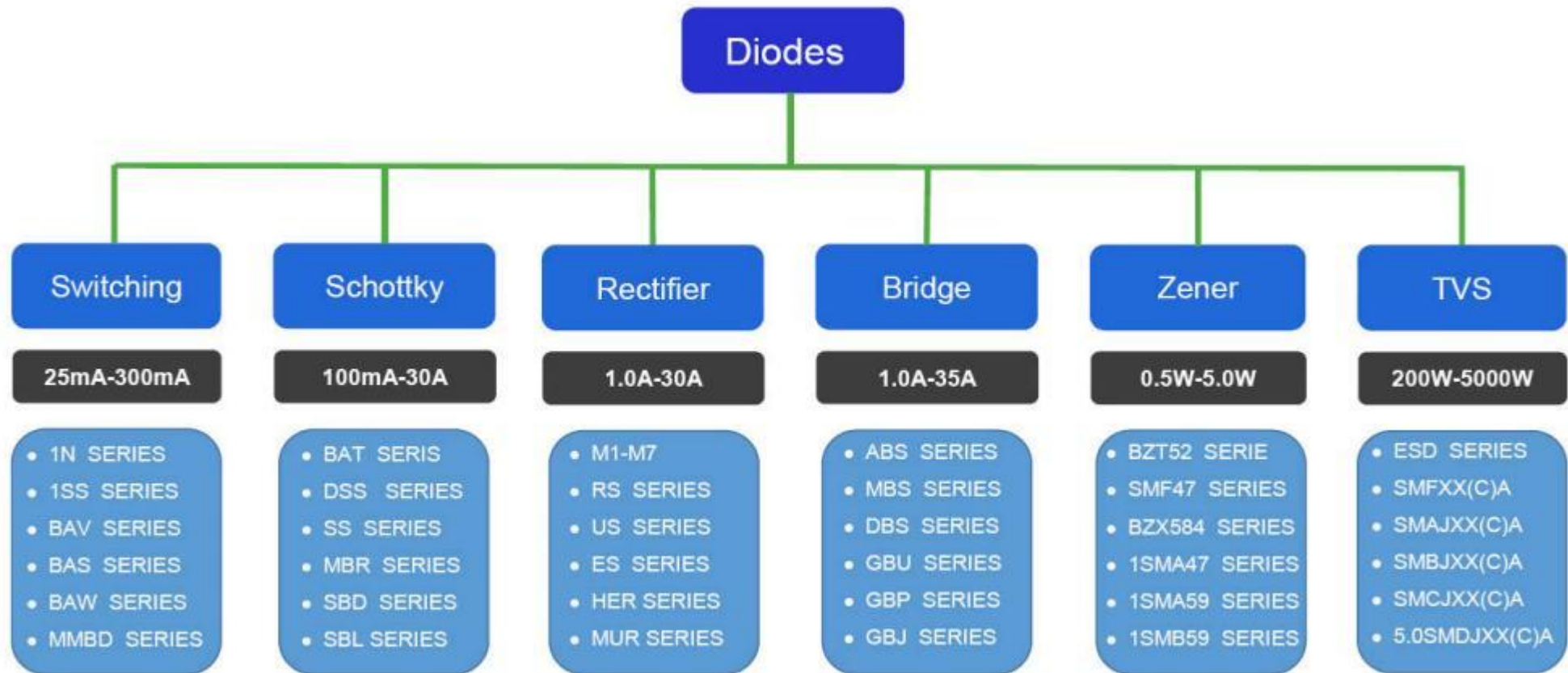


- A-405 Series**
- DO-41 Series**
- DO-15 Series**
- DO-201AD Series**
- R-6 Series**
- Bridge Series**
- Mini Bridge**
- DO-35 (34)**
- DO-41G**
- LL-34 (mini melf)**
- DL-41 (melf)**
- SMA**
- SMB**
- SMC**
- SMAF**
- SOD-123 (FL)**
- SOD-323 (FL)**

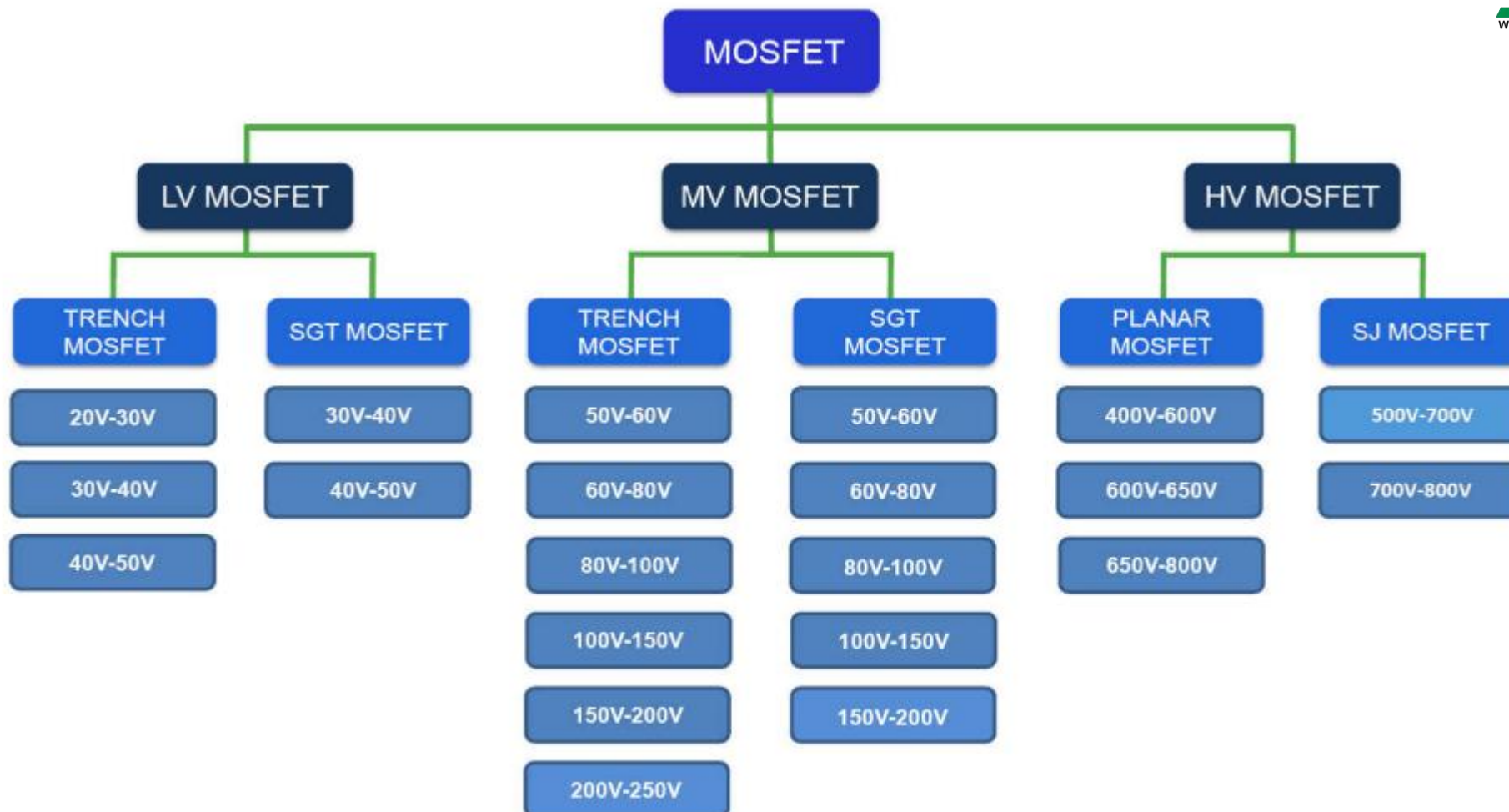
- TO-92**
- TO-220**
- TO-252**
- SOT-89**
- SOT-23**



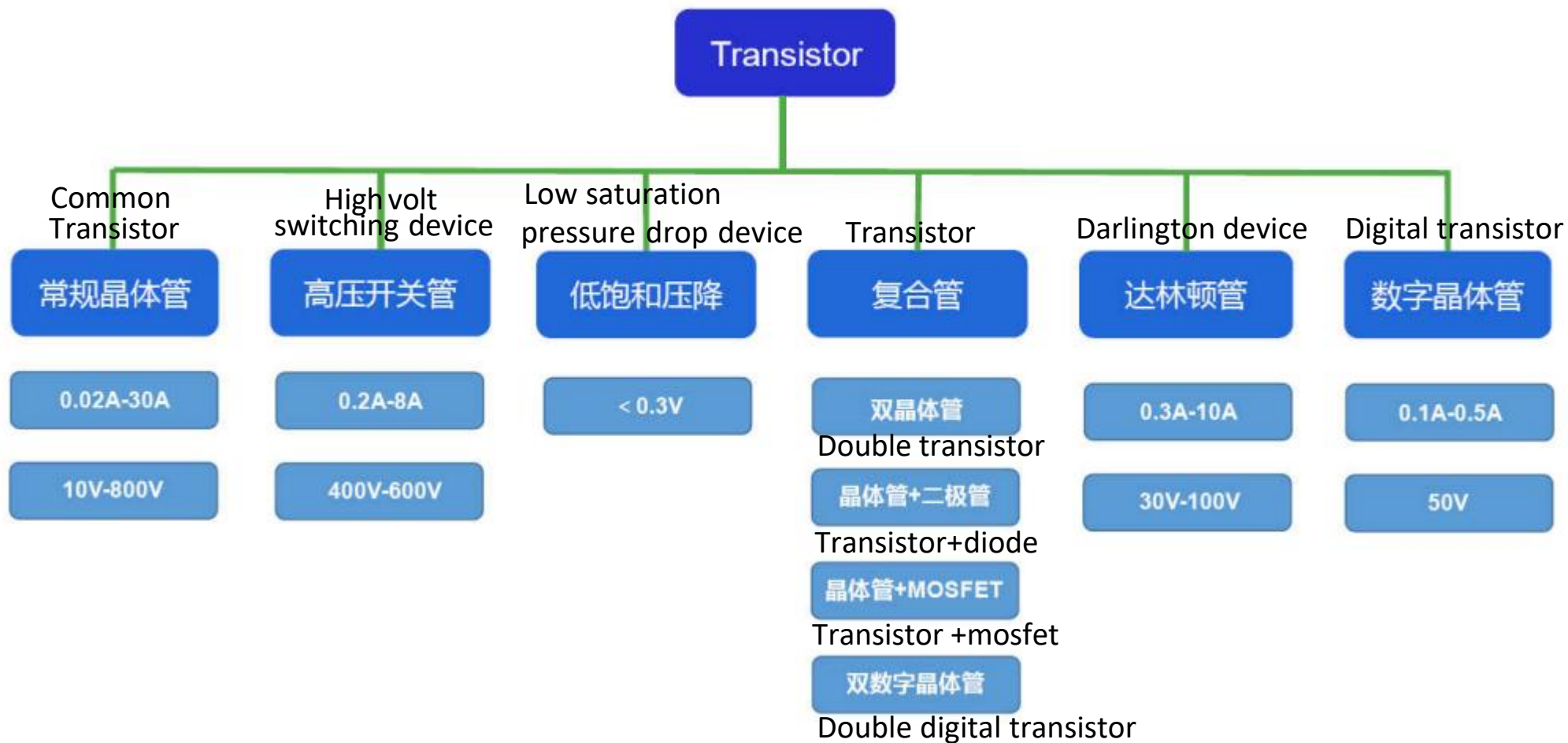
# diode



# MOS tube



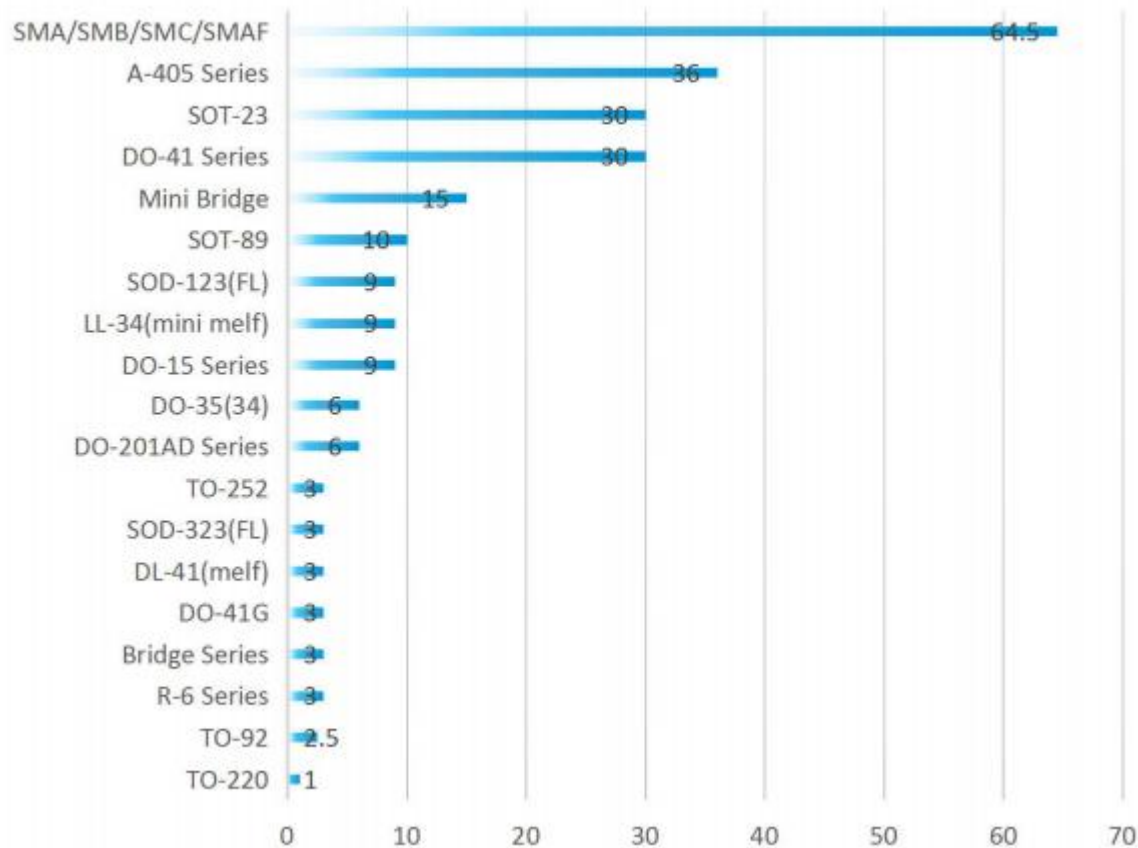
# Triode



# production capacity



## PACKAGE CAPACITY



Total monthly capacity: 246kk

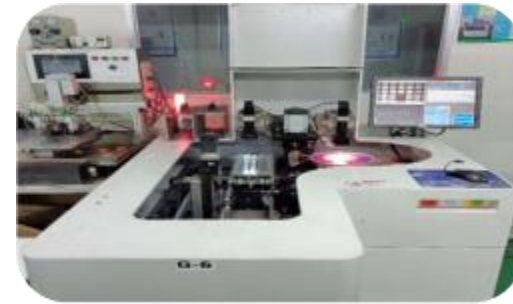
S/N No	Packaging form Package	Production capacity (KK/month) Capacity (KK/month)	%
1	SMA/SMB/SMC/SMAF	64.5	26.22%
2	A-405 Series	36	14.63%
3	DO-41 Series	30	12.20%
4	SOT-23	30	12.20%
5	Mini Bridge	15	6.10%
6	SOT-89	10	4.07%
7	DO-15 Series	9	3.66%
8	LL-34 (minimelf)	9	3.66%
9	SOD-123 (FL)	9	3.66%
10	DO-201AD Series	6	2.44%
11	DO-35 (34)	6	2.44%
12	R-6 Series	3	1.22%
13	Bridge Series	3	1.22%
14	DO-41G	3	1.22%
15	DL-41 (melf)	3	1.22%
16	SOD-323 (FL)	3	1.22%
17	TO-252	3	1.22%
18	TO-92	2.5	1.02%
19	TO-220	1	0.41%
	<b>Total</b>	<b>246</b>	

# Reliability capability



project Items	Equipment model Equipment Model	Manufacturer Manufacturer	Test conditions Test Condition	Test standard Test Standard
Precondition	PTC3002-MU	PARTNER	Bake: 125 °C 24hrs	JESD22-A113
	KTHB-210 THS	KSON	TH: (Level1 or level3)	
Moisture sensitivity level MSL	V-FC8800-LF-N2	VTA	REFLOW: 260 °C max 3 times	JSTD-020D. 1
Steady state damp heat THT	KTHB-210 THS	KSON	85%/85 °C	JESD22-A101
High speed aging HAST	HAST-A	KSON	130 ± 2 °C 85 ± 5%	JESD22-A118
High pressure cooking PCT	KPCT	KSON	121 °C 100% RH	JESD22-A102
High temperature storage HTST	PTC3002-MU	PARTNER	150 °C	JESD22-A103
Temperature cycle TCT	KSKA-515TBS	KSON	-65~150 °C dwell=15min	JESD22-A104
High temperature reverse deflection HTRB	BTR-E600S	ZHONGAN	VR, T=85/110/125 °C	JESD22-A108
Reflow IR	V-FC8800-LF-N2	VTA	260 °C	JESD22-A113
Electric endurance Burn in	BTD. E800	ZHONGAN	V * mA	GB 4938.94
Solder ability	ST-88	METRON	245 °C/5sec	JESD22-B102
Resistance to welding heat SHT	ST-88	METRON	270 °C/10sec	JESD22-B106

# Factory workshop





# Patent certificate



# System environmental protection certificate



## ISO 9001:2015

- Issue date: 07/11/2019
- Expiration date: 07/03/2025

## IATF 16949:2016

- Issue date: 07/05/2022
- Expiration date: 07/04/2023

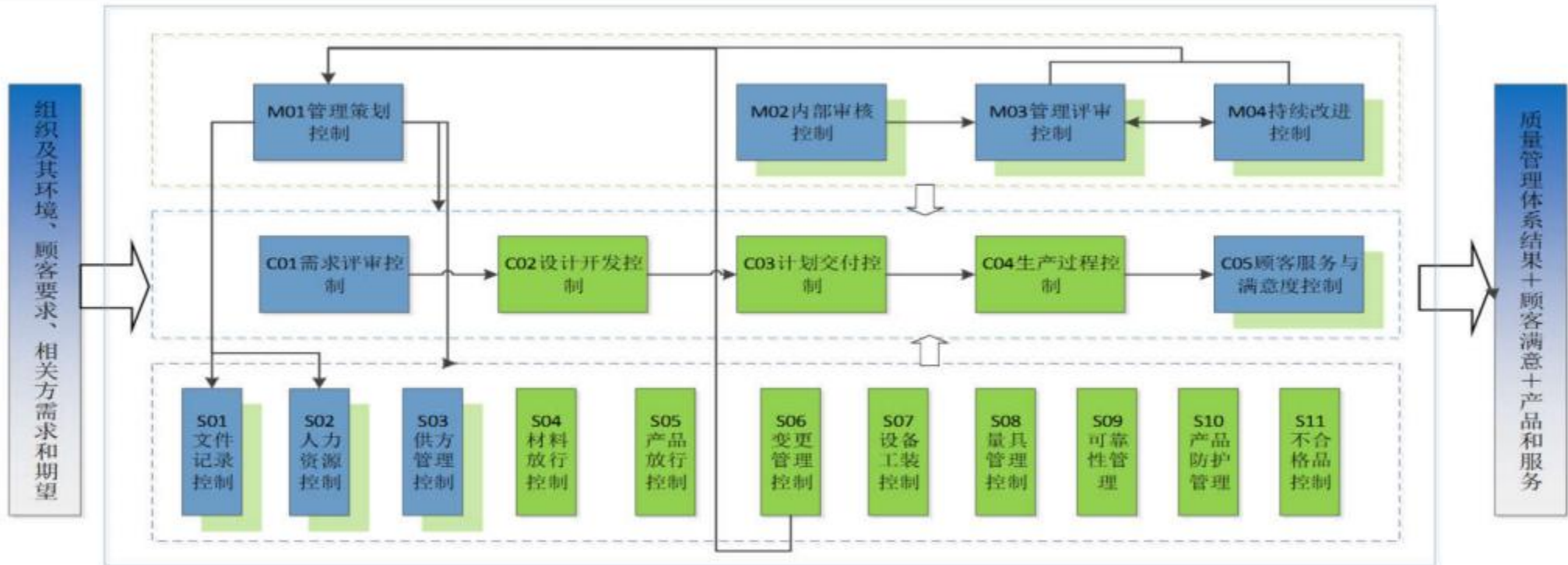
## ROHS

- Issue date: 04/08/2022
- Expiration date: 04/07/2023

## REACH

- Issue date: 04/12/2022
- Expiration date: 04/11/2023

# Quality planning



Management process

Customer oriented process

Support process

M: 管理过程

C: 客户导向过程

S: 支持过程

# Product application



1 电源

Power supply



2 家电

household electrical appliances



3 照明

lighting



4 电动工具

Power tools



5 汽车电子

Automotive Electronics



6 智能仪表

intelligent instrument



7 安防监控

Security monitoring



8 工业控制

Industrial control



# Partners




# social responsibility



**Green products: The company implements a hazardous substance management system, and the materials/products fully comply with RoHS, REACH and other laws and regulations as well as relevant customer requirements.**

*Global thinking, local action: reduce, reuse and recycle*

§ Manage and reduce production waste levels through the use of effective waste treatment systems

§ Explore alternatives to any environmentally threatening materials used in the manufacturing of our products



**Thank you, happy cooperation!**